

SCF

CONTAINER
SOLUTIONS

48FT PALLET
WIDE

48ft Pallet Wide

SCF's 48ft Pallet Wide Container provides one of the largest cubic capacities in the market, whilst maintaining a low tare weight and feature-rich product. Store two chep pallets side by side creating space for 24 pallets or 48 pallets by adding our vertical load bar option.

Key Features

- Lashing rings to secure cargo
- SCF custom base arrangement with reinforced floors
- 40' Handling points
- Reinforced handling points to reduce damage
- F-track for freight restraint

Options

- Vertical Load Bars
- Lightweight Model
- Branding

Details

Built with high-quality materials, SCF's 48ft pallet wide container has been designed to meet the performance requirements of intermodal transportation of goods on road and rail.

This unit is one of the largest external footprints available on the market with up to 24 pallet spaces.

24 pallets not enough? Double the internal capacity by including our vertical load bars for up to 48 pallets double stacked.

These containers are built light to maximise payload and revenue earning ability, without compromising on structural integrity or operational features. Our custom design ensures damage is minimised and utilisation is maximised.

The result is a container that is flexible for capacity requirements, yet does not compromise on quality.

Specifications

48ft Pallet Wide | P4891

Specifications may vary

Internal

Length (mm)	14,490
Width (mm)	2,402
Height (mm)	2,781

External

Length (mm)	14,630
Width (mm)	2,500
Height (mm)	3,000

Weight

Tare (kg)	6,280
Payload (kg)	28,720
MGW (kg)	35,000

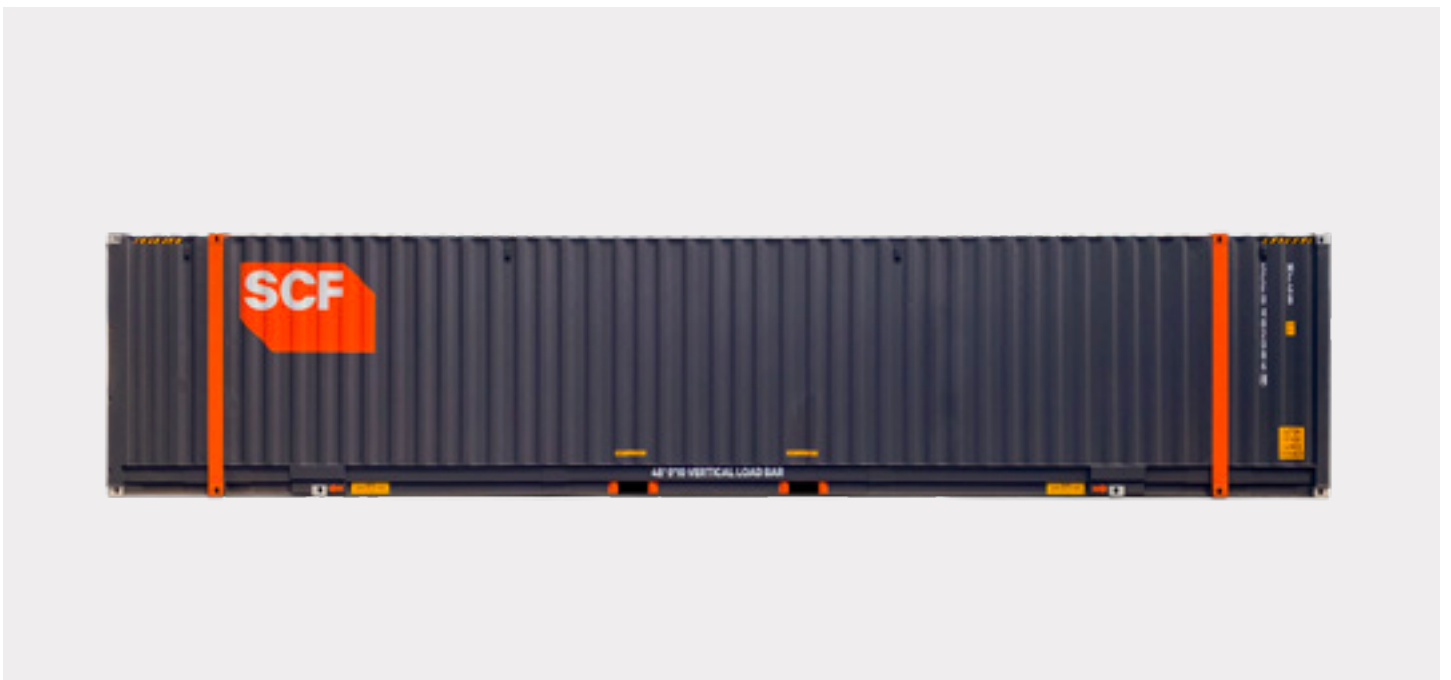
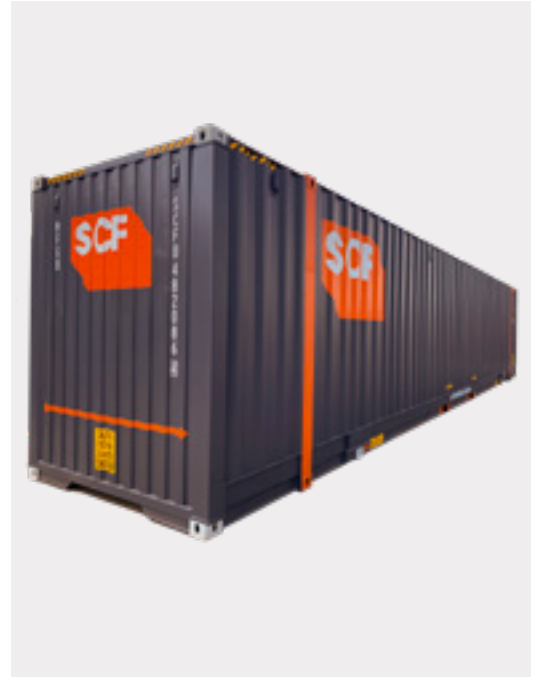


Top Left:
Grow your fleet
with our short
or long-term
hire options.

Middle Left:
Vertical Load Bars
increase capacity,
which is essential
for fragile pallets.

Middle Right:
Highlighted pickup
points make it
easier and safer to
lift.

Below:
Safely transport or
store up to 48
pallets.





CAUTION
PICKUP DURING THE CORNER
LIFTING AND STOWING